

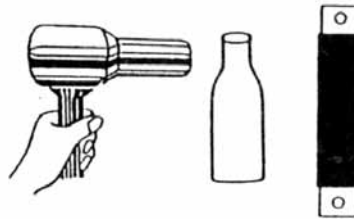
BANDEX HEAT SHRINKING SLEEVE

HEAT SHRINKING SLEEVE

R: RED W: White BL:Blue B: Black G: Green Y: Yellow

- Material: Rigid Shrinkable P.V.C.
- Used for colour distinction and insulation of busbar in control panel. To be shrinked by blower or hot water.
- Maximum service temp : 80°C

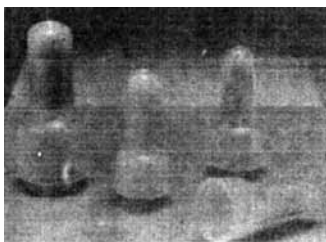
SPIRAL WRAPPING BAND



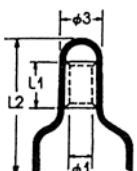
Item No.	LAY FLAT Dimension	Convert to Dia Ø	Shrinkable Range	Colour	Pkg	Price ราคา/ม้วน
HS-20	20	13	21 - 11	R,W,B,BK,Y,G	100 เมตร	@ 350.-
HS-30	30	19	31-16	R,W,B,BK,Y,G		@ 378.-
HS-40	40	25	40-22	R,W,B,BK,Y,G		@ 420.-
HS-50	50			R,W,B,BK,Y,G		@ 530.-
HS-60	60	38	60-33	R,W,B,BK,Y,G		@ 560.-
HS-70	70	44	70-37	R,W,B,BK,Y,G		@ 770.-
HS-80	80	50	80-42	R,W,B,BK,Y,G		@ 840.-
HS-100	100	63	100-55	R,W,B,BK,Y,G		@ 1,050.-
HS-120	120	76	120-65	R,W,B,BK,Y,G		@ 1,190.-
HS-150	150	95	150-90	R,W,B,BK,Y,G		@ 1,400.-

CAT. No.	FOR COPPER BUS BAR/SIZE
HS-20	1/2" x 1/8", 3/16" x 1/2" A, 1/2" x 1/4"
HS-30	3/4" x 1/8", 3/4" x 3/16", 3/4 x 1/4", 1" x 1/8", 1" x 3/16"
HS-40	1 1/4" x 1/8", 1/14 x 3/16", 1 1/4" x 1/4", 1 1/2" x 1/8"
HS-50	1 1/4" x 1/4", 1 1/2" x 3/16", 1 1/2" x 1/4, 1 1/2" x 3/8"
HS-60	2" x 1/8", 2" x 3/16", 2" x 1/4", 2" x 3/8", 2" x 1/2"
HS-70	2 1/2" x 1/8", 2 1/2" x 3/16", 2 1/2" x 1/4"
HS-80	2 1/2" x 3/8", 3" x 1/4", 3" x 3/8", 3" x 1/8"
HS-100	3" x 3/16", 3" x 1/4", 3" x 3/8", 3" x 1/2"

CLOSE END WIRE CONNECTOR

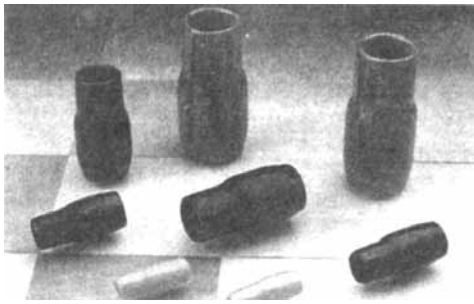


CAT. No.	Ø1	Ø2	Ø3	L1	L2	NORMINAL SECTIONAL AREA	A.W.G	SUITABLE WIRE	PACKING	PRICE ราคา/ตัว
								STRAING mm ² 2 d		
CE-1	2.4	7.8	5.1	7.5	20.0	1.25	22 - 16	0.5 - 1.75	100 pcs	@ 1.55
CE-2	3.0	7.8	5.7	7.5	20.0	2.0	16 - 14	1.0 - 3.0		@ 1.68
CE-5	3.8	10.5	7.3	8.5	25.3	5.5	12 - 10	2.5 - 6.0	100 pcs	@ 2.38
CE-8	4.7	12.0	9.3	9.5	27.2	8.0	8.0	4.0 - 9.0		@ 3.08

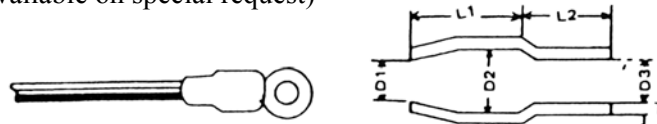


- The above size will be changed without notice if necessary.
- Material: UL approved NYLON 66,94v-2. • Nylon insulated close-end wire connectors.
- To apply, insert pre-stripped wires into connector tube and crimp it with crimping tool to hold wires firmly even in vibration.

VINYL WIRE END CAPS

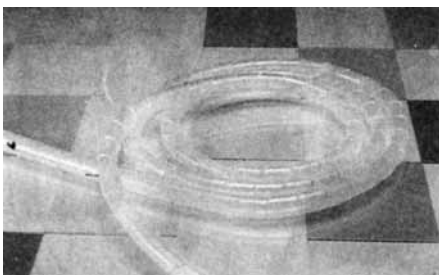


- Material: Soft P.V.C
- Maximum service temp: 80°C
- For the insulation works of wire end terminal. Performing the work with a simple one-touch to tighten and seal against. Dirt, moisture and water.
- Standard color : Red, white, blue, yellow, black. (Green, brown available on special request)



Item No	Wire Suitable	D1	D2	D3	L1	L2	T	Packing	Price
VC-001	600V 1.25 mm ² , 12.5 mm ²	2.8	3.3	3.1	6	7	0.6	100 PCS	@ 0.36
VC-002	600V 2.0 mm, 2.0 mm ² , 1.2 mm ² , Single, 1.6 mm Single	3.3	4.5	3.7	7	7	0.7		@ 0.36
VC-003	600V 3.5 mm ²	4.8	5.7	4.1	9	8	0.8		@ 0.42
VC-005	600V 5.5 mm ² , 2.6 mm Single	4.8	5.7	5.2	9	8	0.8		@ 0.48
VC-008	600V 8.0 mm ² , 3.2 mm Single	6.2	7.2	6.2	10	9	1.0		@ 0.60
VC-014	600V 14 mm ²	8.0	10.0	8.0	13	11	1.1		@ 0.96
VC-022	600V 22 mm ²	9.5	12.0	9.5	15	14	1.2		@ 1.56
VC-038	600V 38 mm ²	11.8	14.0	11.8	17	16	1.5		@ 1.92
VC-060	600V 60 mm ²	13.5	16.8	13.5	20	19	1.5		@ 3.00
VC-080	600V 80 mm ²	16.0	19.0	16.0	25	21	1.6		@ 3.96
VC-100	600V 100 mm ²	18.0	22.0	18.0	30	24	1.7	50 PCS	@ 5.40
VC-125	600V 125 mm ²	20.0	24.0	20.0	32	25	1.8		@ 6.00
VC-150	600V 150 mm ²	22.0	24.4	22.0	34	31	1.81		@ 7.80
VC-200	600V 200 mm ²	28.0	32.0	24.0	35	30	2.0	20 PCS	@ 9.60
VC-250	600V 250 mm ²	32.0	36.0	25.0	40	35.5	2.0		@ 12.00
VC-325	600V 325 mm ²	34.3	38.0	28.5	40	36.5	2.01		@ 14.40

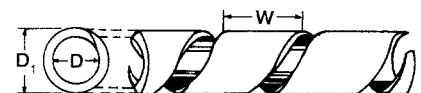
SPIRAL WRAPPING BAND



- ◆ MATERIAL : Made from P.E. material.
- ◆ Excellent in insulation and binding strength.
- ◆ Color : Standard in natural. Black and color available upon request.
- ◆ Flexible construction enables bands to follow wire ways easily.
- ◆ Durable, reusable with retained spiral strength.

Item No.	Item No. Black สีดำ	D	D1	W	Wrapping Range (mm.)	Packing	Price ราคา/เมตร	
							สีขาว	สีดำ
SW-06	SW-06B	4	6	7.0	4 - 50	10 m per plastic bag	@ 6.00	@ 7.50
SW-08	SW-08B	6	8	10.8	6 - 60		@ 7.50.-	@ 9.50
SW-10	SW-10B	7.5	10	11.4	7.5 - 60		@ 8.00	@ 10.00
SW-12	SW-12B	9	12	13.9	9 - 65		@ 9.00	@ 11.50
SW-15	SW-15B	12	15	15	12 - 75		@ 12.00	@ 15.00
SW-19	SW-19B	15	19	18.2	15 - 100		@ 16.00	@ 20.00
SW-24	SW-24B	20	24	19.6	20 - 130		@ 20.00	@ 24.00

- ◆ Fix ends of band with cable ties and spiral wire bundles in clockwise direction to complete works.
- ◆ Expand spiral range almost without limit.
- ◆ Black color available.



An economical way of cable binding. Easily applied to electric harness cables and wire bundles. Cut-to-fit versatility in convenient roll-form.