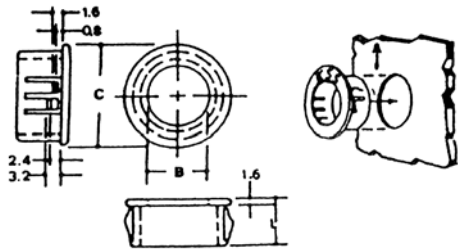
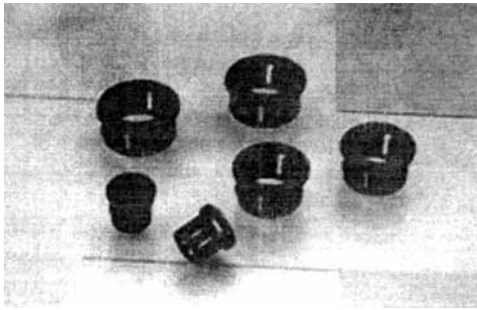


# BANDEX SNAP BUSHING & HOLE PLUG

## SNAP BUSHING

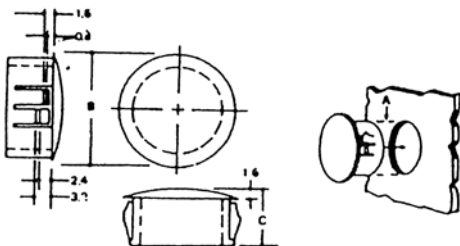
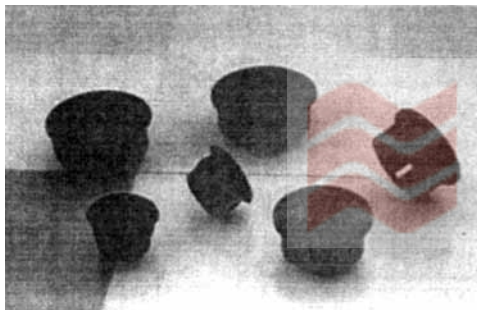


- Material: Nylon(Black)
- SNAP BUSHING smooth and insulate your raw-edged holes in metal chassis
- Locking into hole firmly with fingertip pressure.
- Protect electrical cables, ropes, utility lines through metal holes.
- Available in application for chassis thickness from 0.8 mm to 3.2 mm



Item No.	Mounting Hole				Pack Qty	PRICE
	mm					
	A	B	C	L		
SB-08	7.9	5.2	9.4	8.0	100 pcs	@ 1.30
SB-10	9.5	6.3	12.0	10.3		@ 1.54
SB-13	13.0	8.2	14.5	10.3		@ 1.68
SB-16	15.9	12.2	18.6	10.3		@ 2.10
SB-19	18.9	14.3	21.5	10.3		@ 2.30
SB-22	22.0	17.3	23.8	11.5		@ 2.52
SB-26	25.1	19.1	28.0	11.5		@ 2.80
SB-30	29.7	24.1	32.5	11.5		@ 3.50
SB-38	38.1	29.0	41.2	11.4		@ 5.50

## HOLE PLUGS

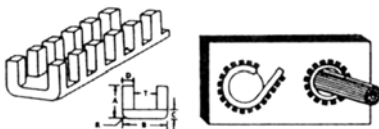


- Material: Nylon(Black)
- HOLE PLUG close your unneeded holes with fingertip pressure at own cost and assure good appearance.
- Available in application for chassis thickness from 0.8 mm to 3.2 mm.



Item No.	Mounting Hole			Pack Qty	PRICE
	mm				
	A	B	C		
HP-08	8.0	11.9	8.0	100 pcs	@ 1.30
HP-10	10.0	13.0	10.5		@ 1.30
HP-13	13.0	16.9	10.5		@ 1.55
HP-16	16.0	19.8	10.5		@ 1.55
HP-19	19.0	22.9	10.5		@ 2.50
HP-22	22.0	24.9	11.3		@ 2.80
HP-25	25.0	28.3	11.5		@ 3.50
HP-30	30.0	34.2	11.5		@ 4.20
HP-45	44.5	49.1	11.1		@ 7.75

## MOVABLE BUSHING



- **STANDARD**
  1. P.E. Extruded movable bushing.
  2. 10M per roll packed in a plastic bag.
  3. Cut to fill any hole size for protecting cords, wires, cables against damage from sharp panel edges.
- Available upon request  
Also available in moulded PE bushing.  
25 cm per piece and 40pcs packed per bag.  
For your order, please specify MOULDED MOVABLE BUSHING.  
Otherwise, will be treated as standard ones.



Part No.	T	Max. Chassis	Packing	Material	Price
	mm	Thickness			
		mm			
MB-010	1	1	10 m.	P.E.	@ 250.-
MB-016	1.6	1.0-1.6			@ 250.-
MB-020	2	1.6-2.0			@ 295.-
MB-024	2.4	2.0-2.4			@ 295.-
MB-032	3.2	2.4-3.2			@ 332.-
MB-045	4.5	3.2-4.5			@ 392.-